

Amp And Sub Wiring Diagram And Crutchfield Car Stereo Subwoofer Wiring Diagram By XPMissions

Amp and sub wiring diagram and crutchfield car stereo subwoofer wiring diagram

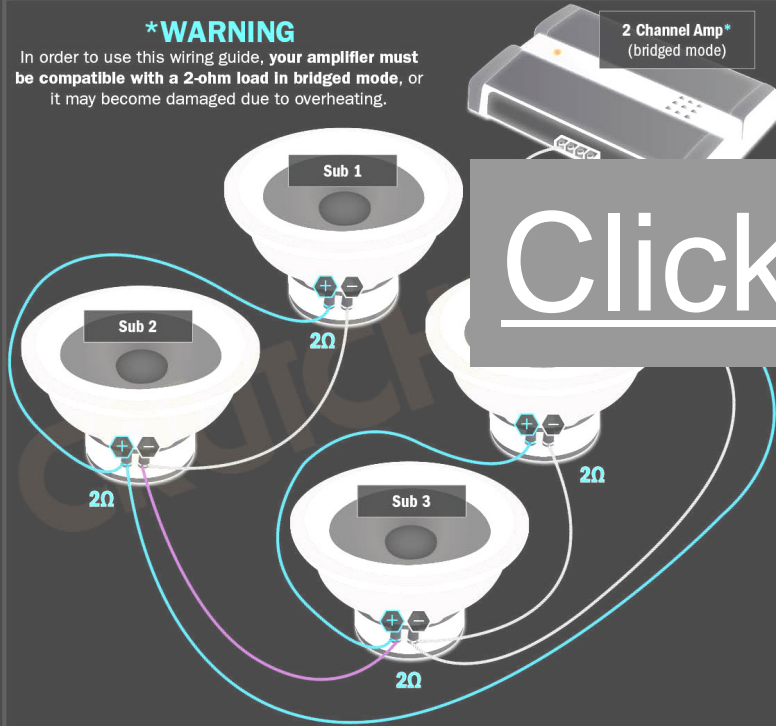
Crutchfield's Subwoofer Wiring Diagrams

Four 2-ohm subs, bridged 2-channel amp: 2-ohm load*

*WARNING

In order to use this wiring guide, your amplifier must be compatible with a 2-ohm load in bridged mode, or it may become damaged due to overheating.

2 Channel Amp*
(bridged mode)



Wiring Diagram Legend

- Positive Wire
- Bridged Wire
- + Positive Terminal
- Negative Wire
- Ω Impedance Level (In Ohms)
- Negative Terminal

CRUTCHFIELD

Copyright© 2007 by Crutchfield Corporation. All rights reserved. Crutchfield® is a registered servicemark of Crutchfield Corporation.

Click to enlarge



- | | | | |
|-----------------|----------------|------------------|--------------------|
| 1 GPS Antenna | 7 Video Out 1 | 13 Cam Power Out | 19 Reverse |
| 2 Radio Antenna | 8 Video Out 2 | 14 GND | 20 CAN BUS Decoder |
| 3 Video IN | 9 Sub Woofer | 15 KEY 1 | 21 Power Connector |
| 4 CAM IN | 10 Rear Out L | 16 KEY 2 | 22 USB Cable |
| 5 AUX IN R | 11 Rear Out R | 17 AMP CTRL | |
| 6 Aux IN L | 12 Front Out R | 18 Reverse | |

xpmissions.com