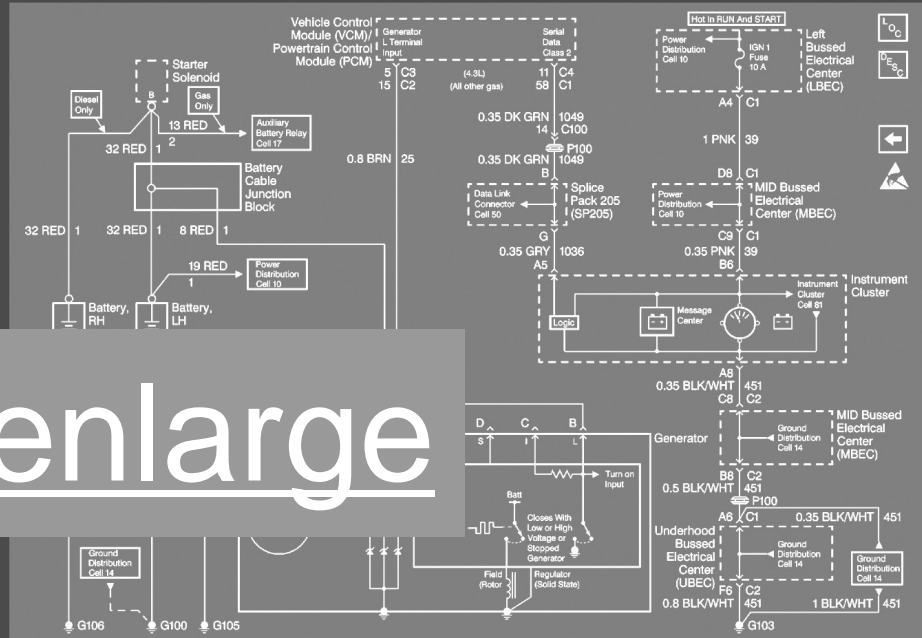
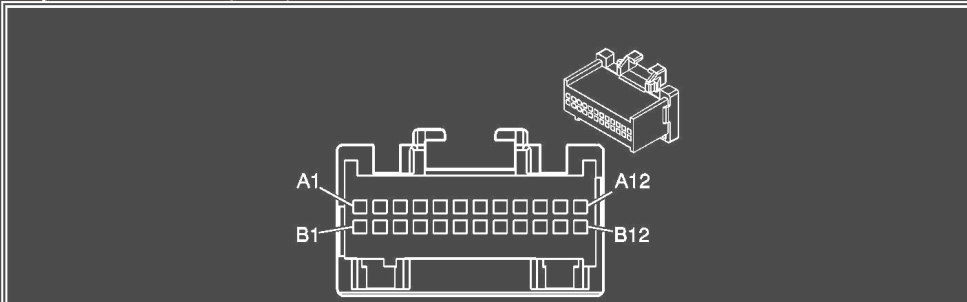


Silverado Speaker Wiring Diagram And Silverado Wiring Schematic By XPMissions

Silverado speaker wiring diagram and silverado wiring schematic

Body Control Module (BCM) - C4



Click to enlarge

Connector Part Information		<ul style="list-style-type: none"> • 12110206 • 24-Way F Micro 	
Pin	Wire Color	Circuit No.	
A1	LT GRN	80	Key In Ignition Switch Signal
A2	YEL	307	Headlamp Switch Flash to Pass Signal
A3	WHT	530	Off/Run/Crank Voltage
A4	PNK	39	Ignition 1 Voltage
A5	--	--	Not Used
A6	DK BLU/ WHT	149	Cargo Lamp Low Control (Avalanche/Escalade EXT)
	--	--	Not Used
A7	LT BLU	1134	Park Brake Switch Signal
A8	GRY	1524	Backup Lamp Signal
A9-A11	--	--	Not Used
A12	WHT	103	Headlamp Switch Headlamps On Signal
B1-B2	--	--	Not Used
B3	YEL	43	Accessory Voltage
B4-B5	--	--	Not Used
B6	GRY/BLK	2226	Instrument Panel Lamps Dimmer Switch Low Reference
B7	BLK	279	Ambient Light Sensor Low Reference
B8	--	--	Not Used
B9	DK BLU/WHT	1495	Courtesy Lamps On Signal
B10-B12	--	--	Not Used